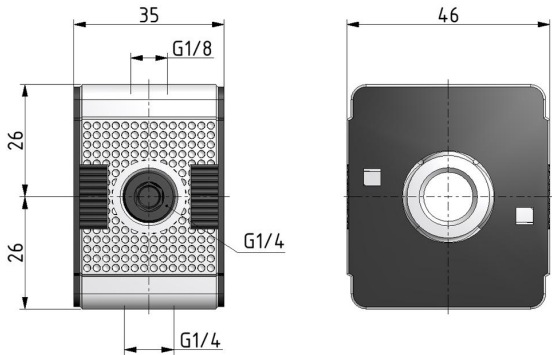




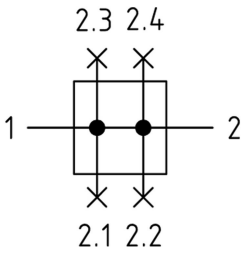
Distributor small G1/4

Multi-Fix Serie



Article type	Article number	Series	Flow	Weight (kg)
Z.11	005002	Multi-Fix	None l/min	0,1934

Symbol



Technical data

Connection:
G 1/4

Construction size:
BG1

Medium:
Compressed air, neutral gases

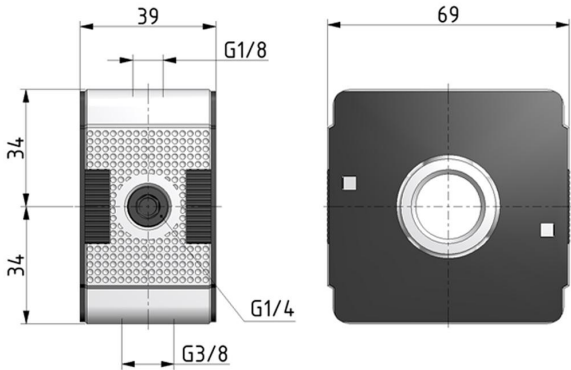
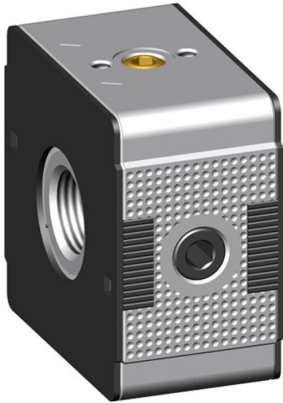
Temperature area:
-10 °C - +60 °C

System extensions:
Cross distributor (4-fold / wide)



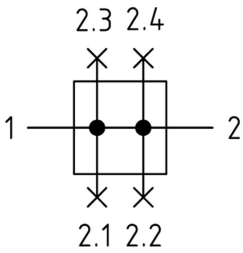
Distributor small G1/2

Multi-Fix Serie



Article type	Article number	Series	Flow	Weight (kg)
Z.33	005120	Multi-Fix	None l/min	0,3609

Symbol



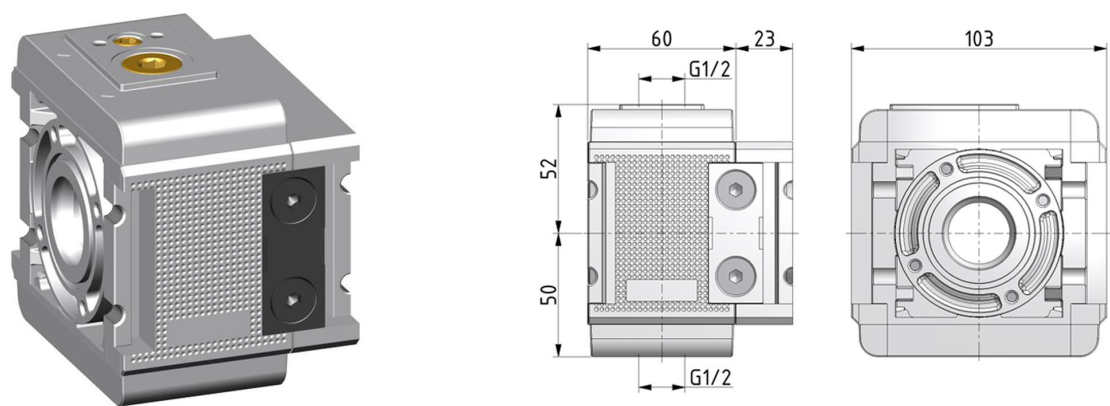
Technical data

Connection: G 1/2	Construction size: BG3	Input pressure P1 max.: 16 bar
Medium: Compressed air, neutral gases	Temperature area: -10 °C - +60 °C	System extensions: Cross distributor (4-fold / wide)
Flow rate 1>2.1 Un.: 2600 l/min		



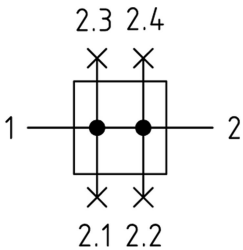
Distributor small G1 with 1x connection plate

Multi-Fix Serie



Article type	Article number	Series	Flow	Weight (kg)
Z.55 AP	010183	Multi-Fix	None l/min	1,2422

Symbol



Technical data

Connection: G 1	Construction size: BG5	Input pressure P1 max.: 16 bar
Medium: Compressed air, neutral gases	Temperature area: -10 °C - +60 °C	System extensions: Cross distributor (4-fold / wide)
Flow rate 1>2: 25000 l/min	Flow rate 1>2.4 Hi.: 10000 l/min	