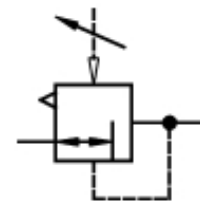
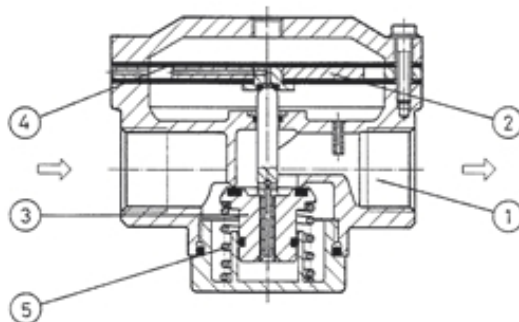


# Regulator G 1/2



item	type	DRI.33		
port size		G 1/2		
description		air line regulator with diaphragm and relieving feature pneumatic pilot-operated		
mounting	arbitrary			
supply pressure	Pe max. 40 bar			
reduced pressure	equal to the pilot-regulator (Pa max. 16 bar)			
media and ambient temperature	max. 80°C			
fixing	bracket			
weight	0,765 kg			



series 3

ordering information

**DRI. \*\* \***

type

port size  option

ordering example: DRI.33

### replacement parts

( repair kit: ESA-DRI.33 )

no	description	material	order-no
1	body	zinc - Z 410	---
2	diaphragm complete	NBR - Ms - Al	
3	valve cone	NBR - Ms	
4	diaphragm	NBR	
5	spring	DR.33-28 stainless steel	5.1533.28.000

### application information

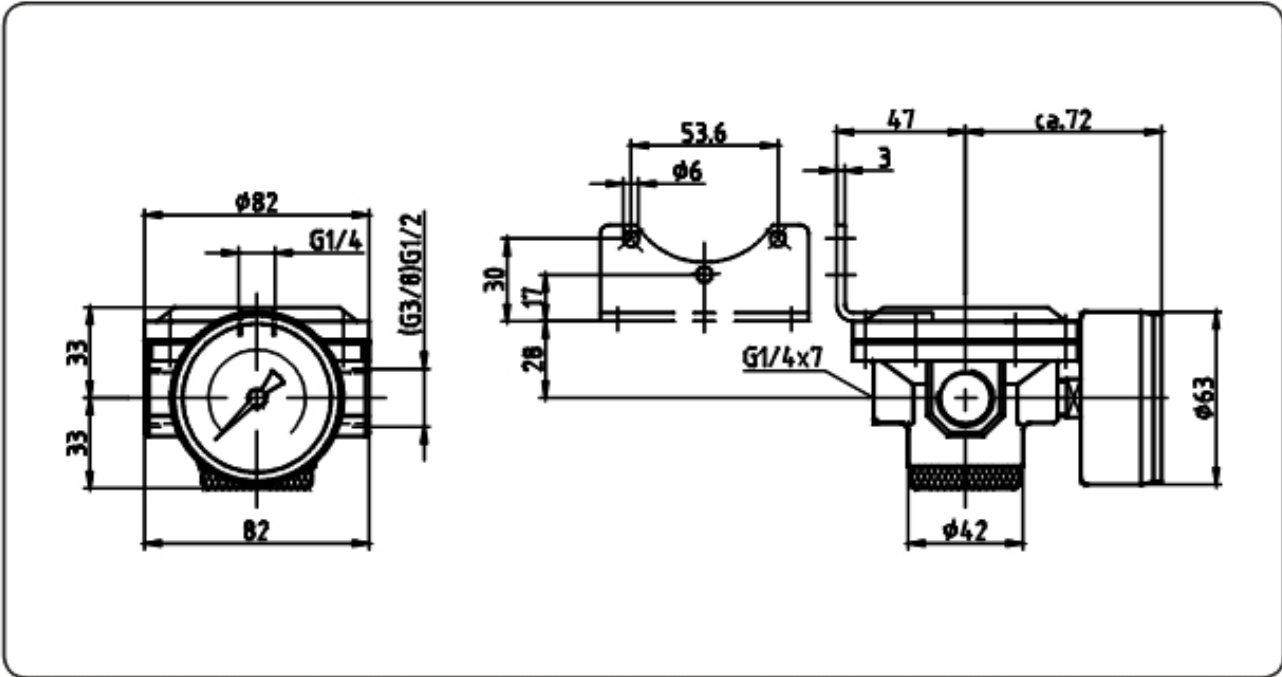
– on the reverse side

port size	
1	33 G 1/2
options	
G	gauge ø63
2	

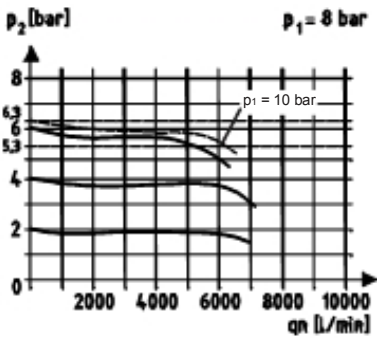
technical modifications keep in reserve!

page: DRI.33 (04.05)

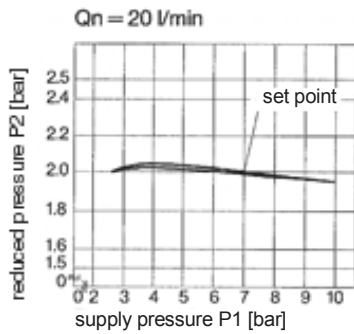
dimensions (mm)



flow characteristics



pressure characteristics



accessories

gauge

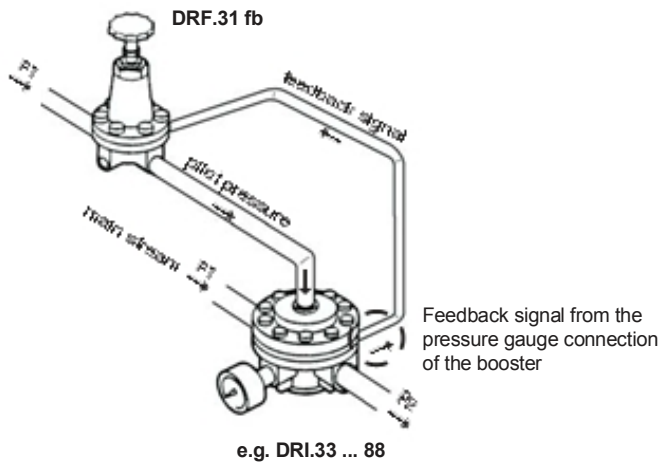
type:  
G 63. 3/ 6 R  
G 63. 6/10 R  
G 63.10/16 R

mounting bracket

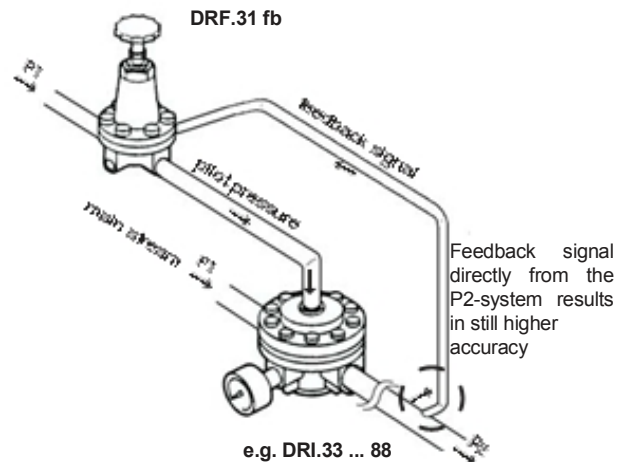
type: BW.30

application-information

Operating conditions version 1



Operating conditions version 2

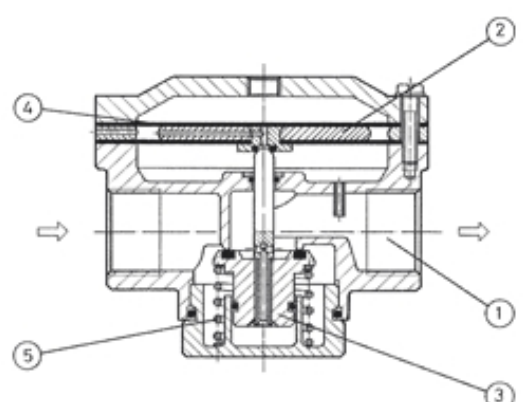
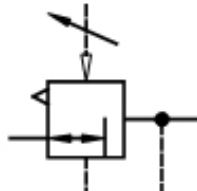


# Regulator

# STANDARD-SERIES

type	DRI.54	DRI.55	
item			
port size	G 3/4	G 1	
description	air line regulator with diaphragm and relieving feature		
	pneumatic pilot-operated		
mounting	arbitrary		
supply pressure	Pe max. 40 bar		
reduced pressure	equal to the pilot-regulator (Pa max. 16 bar)		
media and ambient			
temperature	max. 80°C		
fixing	bracket, install in pipe line		
weight	1,740 kg		



**replacement parts** ( repair kit: ESA-DRI.55 )

no	description	material	order-no
1	body	Al	---
2	diaphragm complete	NBR - Ms - Al	
3	valve cone	NBR - Ms	
4	diaphragm	NBR	
5	spring	DR.55-22 stainless steel	5.1555.22.000

series 5

ordering information

**DRI. \* \* \***

type

port size  option

ordering example: DRI.55

port size	
1	54 G 3/4
	55 G 1
<b>options</b>	
2	G gauge ø63

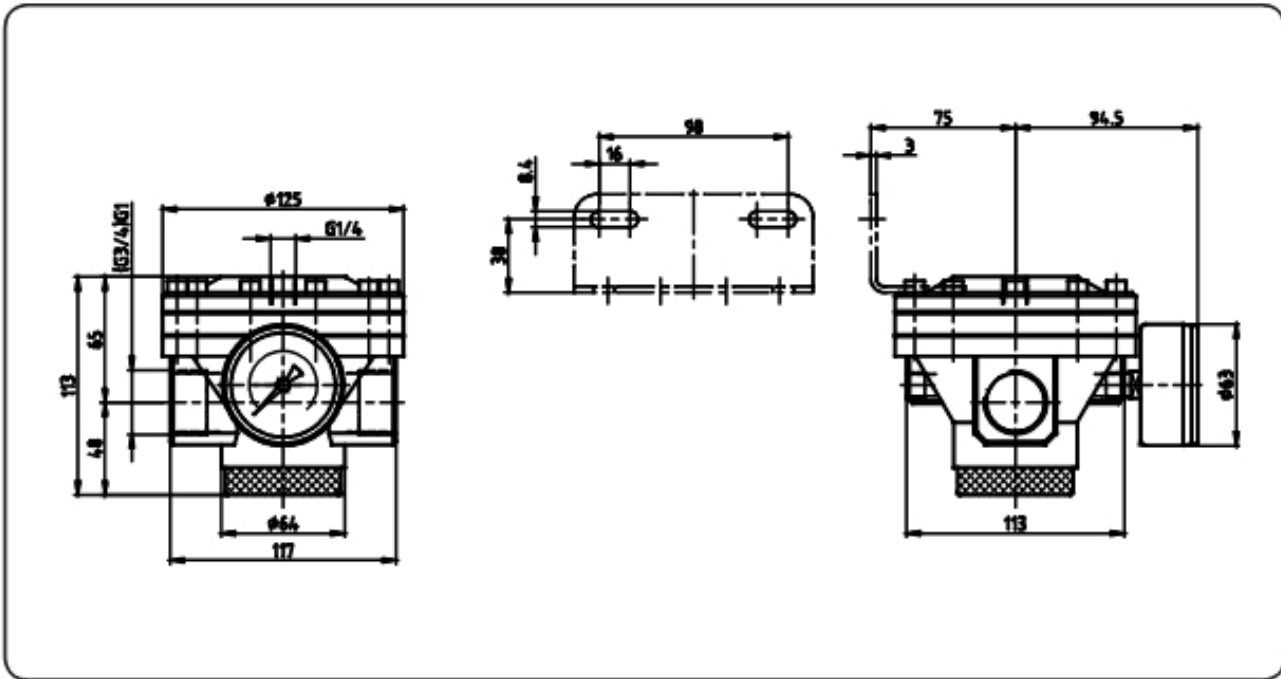
## application information

– on the reverse side

technical modifications keep in reserve!

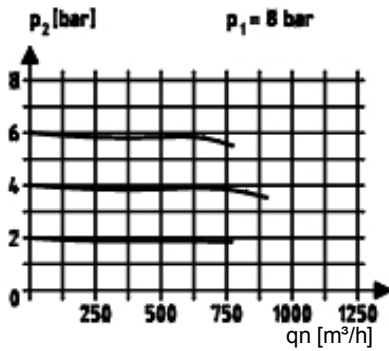
page: DRI.55 (05.07)

dimensions (mm)

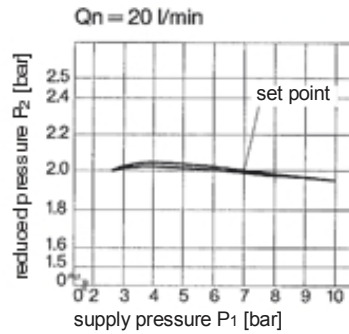


technical modifications keep in reserve!

flow characteristics



pressure characteristics



accessories

mounting bracket



type: BW.50

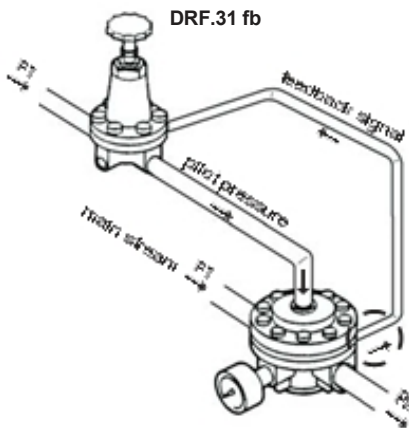
gauge



type:  
G 63. 3/ 6 R  
G 63. 6/10 R  
G 63.10/16 R

application-information

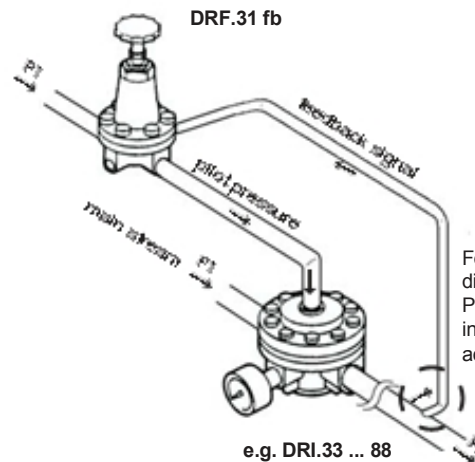
Operating conditions version 1



e.g. DRI.33 ... 88

Feedback signal from the pressure gauge connection of the booster

Operating conditions version 2



e.g. DRI.33 ... 88

Feedback signal directly from the P2-system results in still higher accuracy

# Regulator G 1 1/4, G 1 1/2



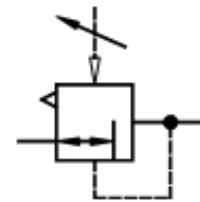
	type	DRI.76	DRI.77
item			
port size		G 1 1/4	G 1 1/2
description			
		pneumatic pilot-operated air line regulator with diaphragm and relieving feature	
mounting			
		arbitrary	
supply pressure			
		Pe max. 40 bar	
reduced pressure			
		equal to the pilot-regulator (Pa max. 16 bar)	
media and ambient			
temperature			
		max. 80°C	
fixing			
		bracket, install in pipe line	
weight			
		2,240 kg	



technical modifications keep in reserve!

**replacement parts** ( repair kit: ESA-DRI.77 )

no	description	material	order-no.
1	body	Al	---
2	diaphragm assembly	NBR - Ms - Al	
3	valve cone	NBR - Ms	
4	diaphragm	NBR	
5	spring	DR.77-5 stainless steel	5.1577.05.000



series 7

ordering information

**DRI. \* \* \***

type	
<input type="checkbox"/> port size	<input type="checkbox"/> option

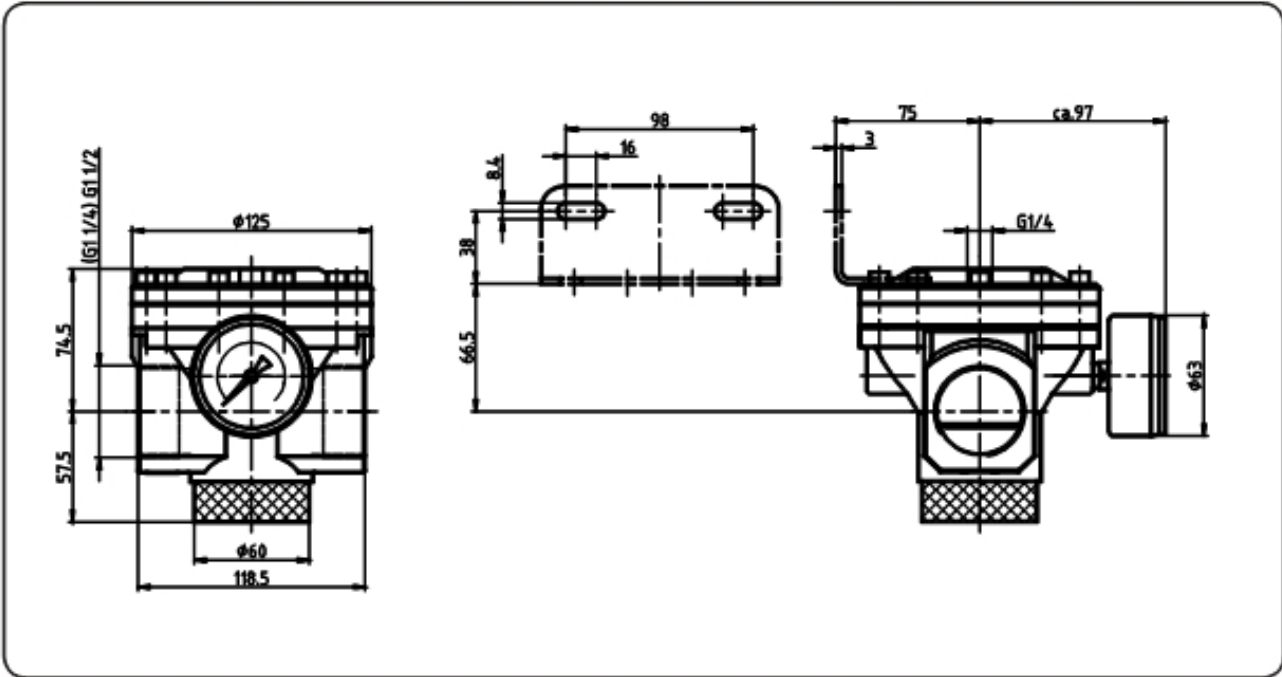
ordering example: DRI.77

port size	
1	76 G 1 1/4
	77 G 1 1/2
options	
2	G gauge ø63

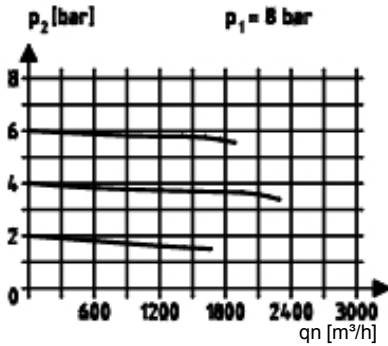
## application information

– on the reverse side

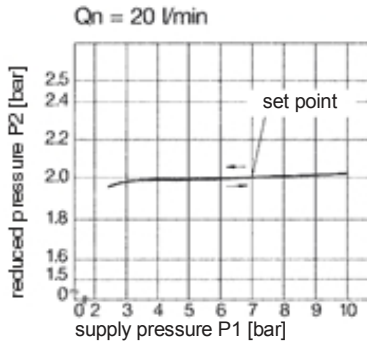
dimensions (mm)



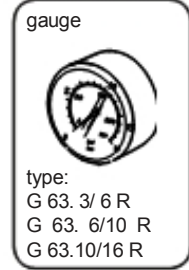
flow characteristics



pressure characteristic

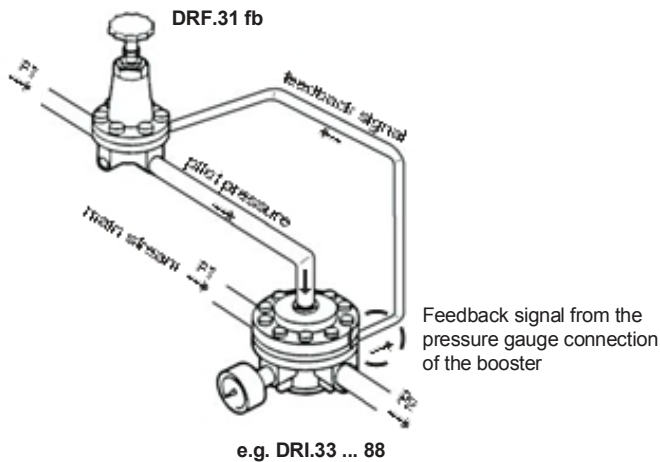


accessories



application-information

Operating conditions version 1



Operating conditions version 2

